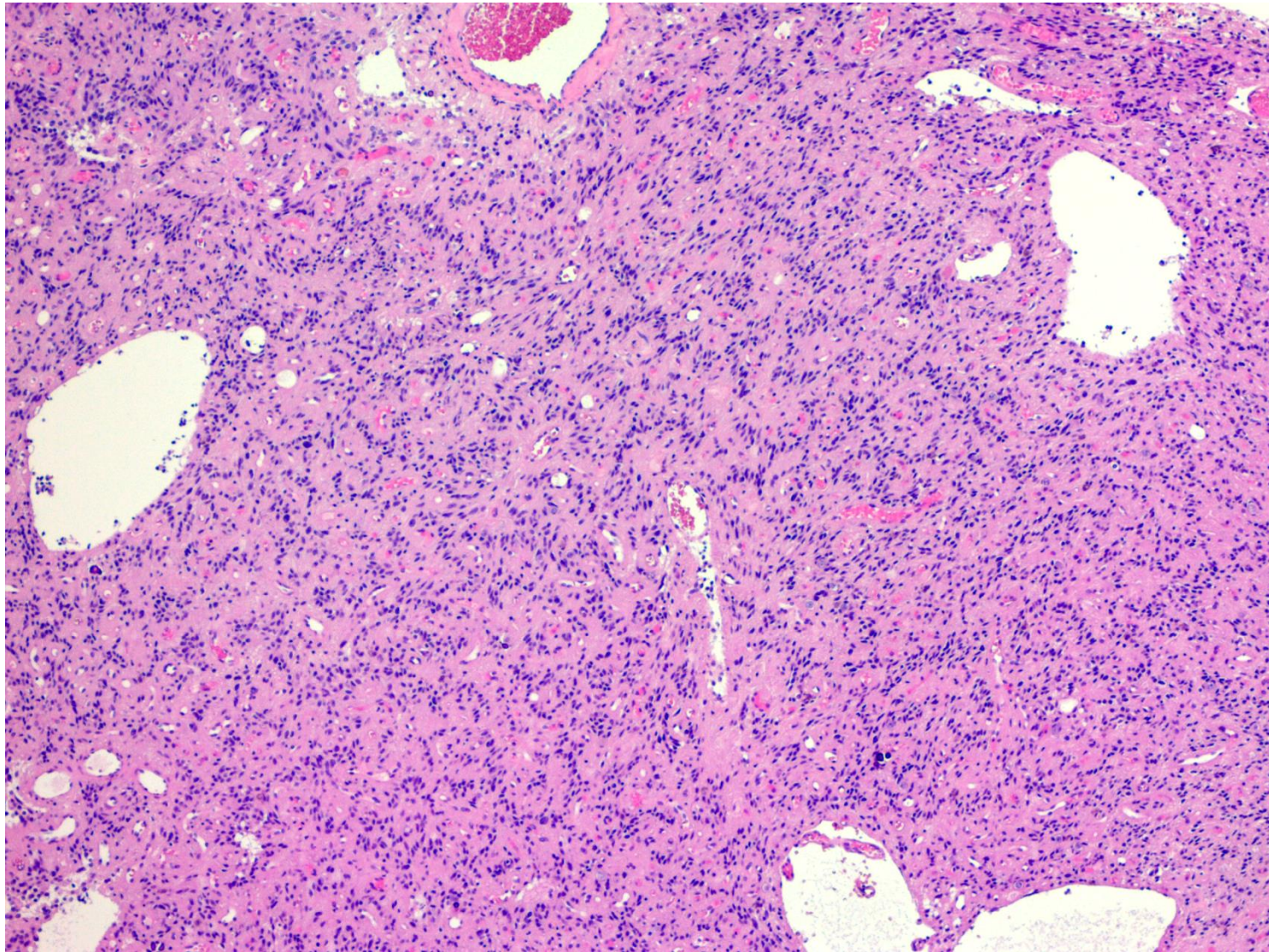


# Case of the Month

Sanna Huovinen and Hannu Haapasalo  
Fimlab Laboratories, Tampere, Finland

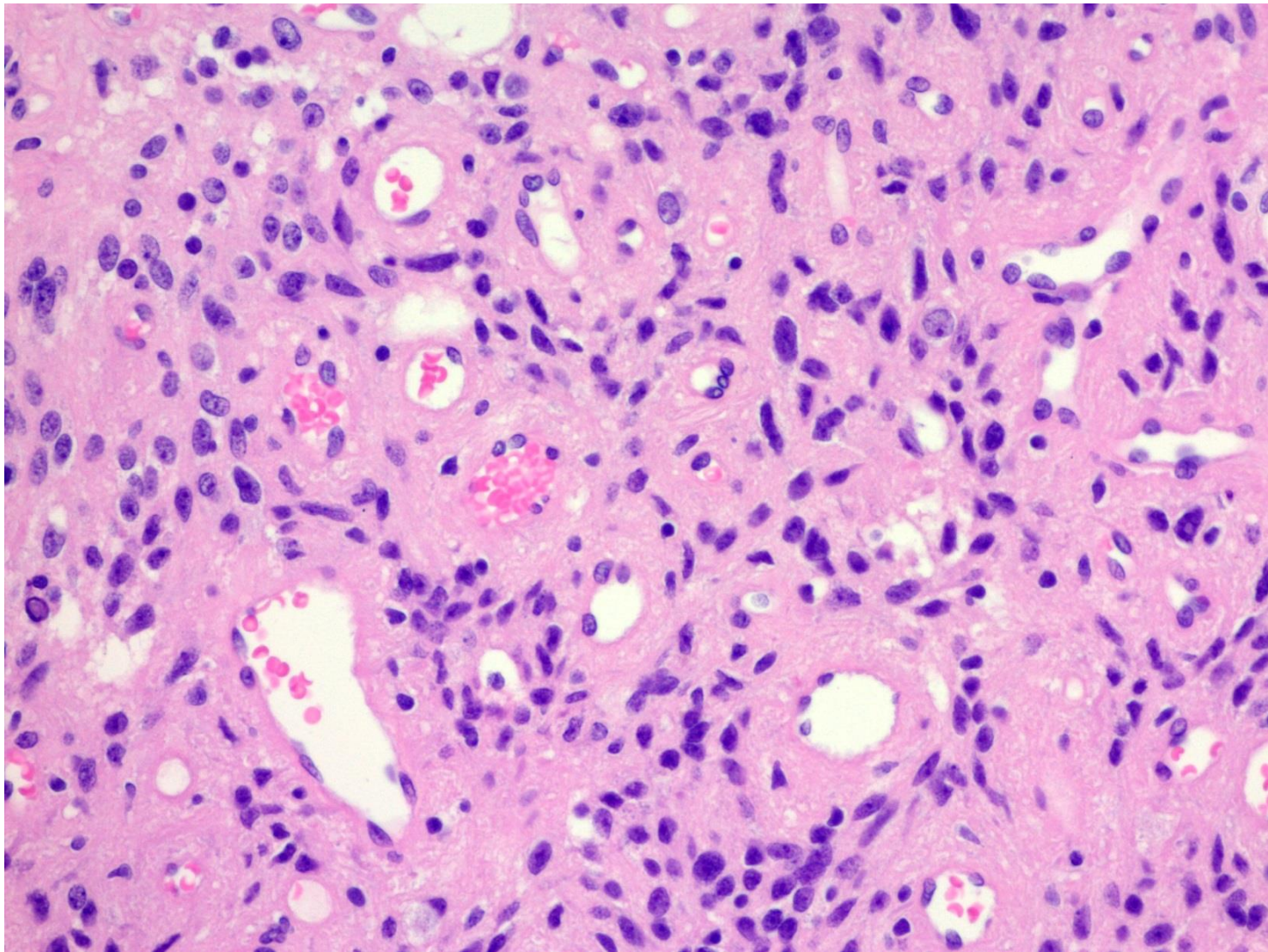
# Case history

- The patient was a 20 year-old male who had suffered from epileptogenic seizures for a few months prior to the diagnosis
- MRI showed a partly cystic tumor with a nonenhancing solid component localized in the medial temporal lobe



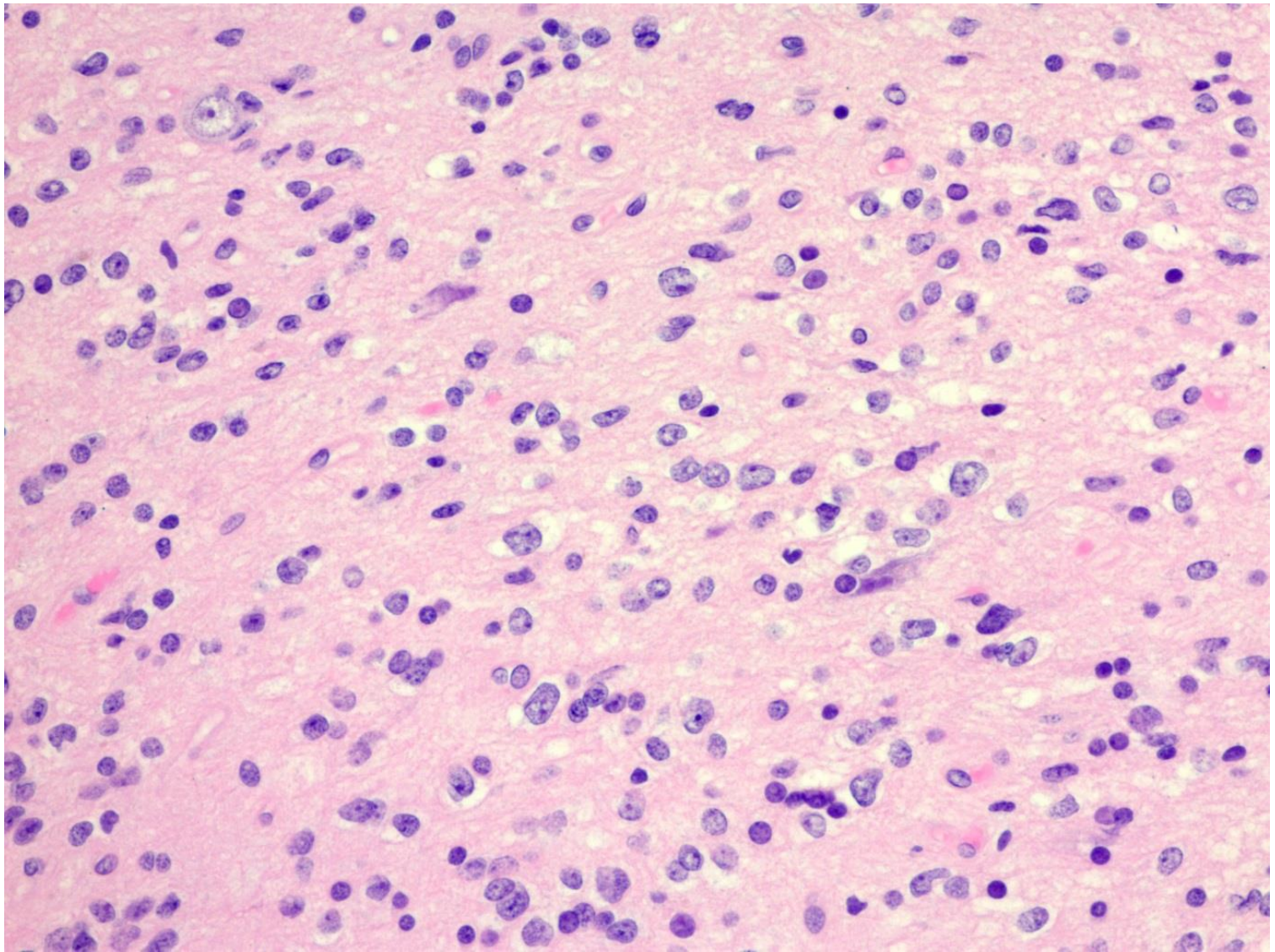
H&E. Original magnification x 40





H&E. Original magnification x 200

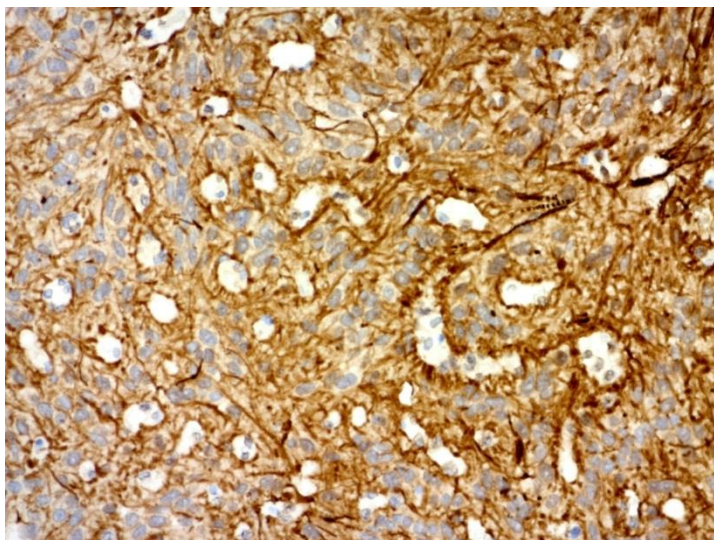




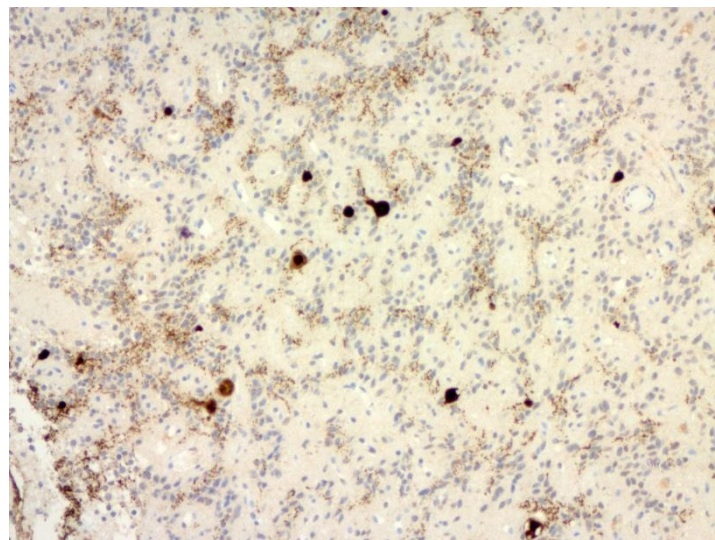
H&E. Original magnification x 200



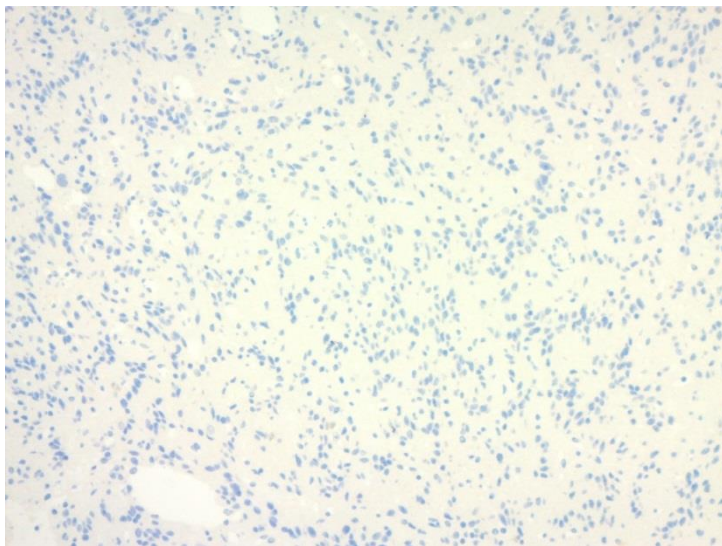
GFAP



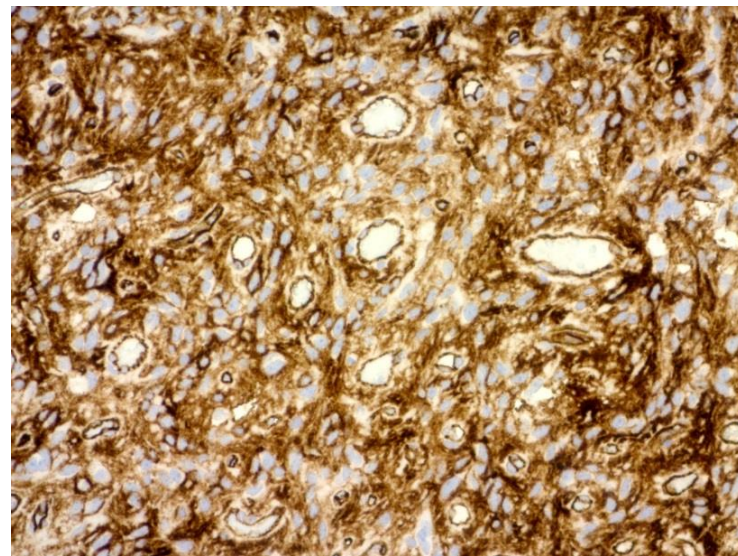
NeuN



IDH-1

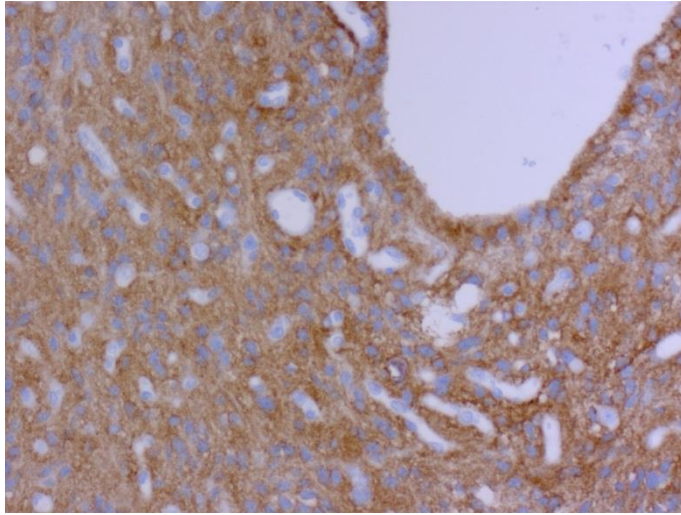


CD34

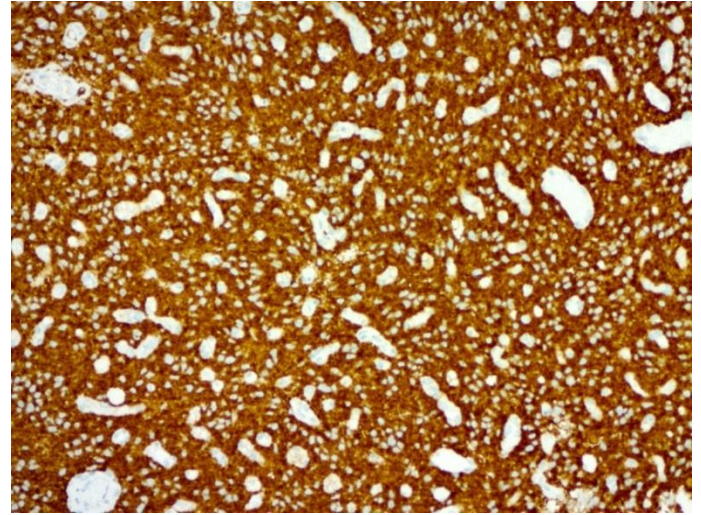




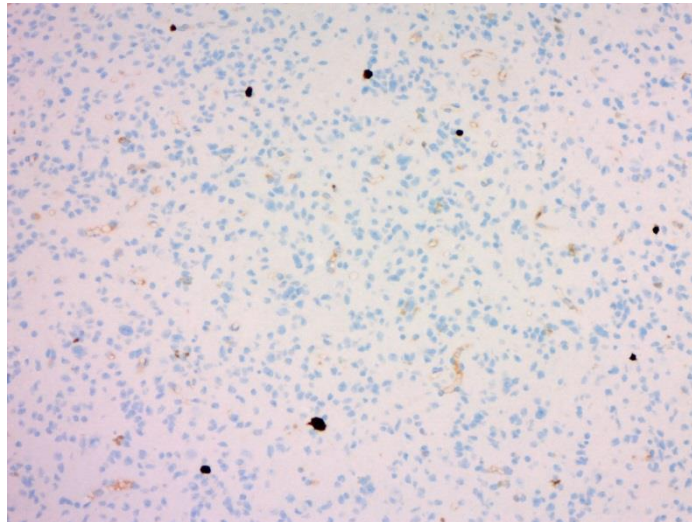
FGFR3



BRAF



Ki-67



Diagnosis?



# Case of the month – Diagnosis

- Polymorphous low-grade neuroepithelial tumor of the young (PLNTY)
- A recently described epileptogenic low-grade neuroepithelial tumor with oligodendroglioma-like components, infiltrative growth and CD34-immunopositivity
- Immunohistochemistry showed positivity for both BRAF V600E and FGFR3. Genetic studies are on the way.
- Ref: Huse JT et al. Polymorphous low-grade neuroepithelial tumor of the young (PLNTY): an epileptogenic neoplasm with oligodendroglioma-like components, aberrant CD34 expression, and genetic alterations involving the MAP kinase pathway. *Acta Neuropathol.* 2017; 133(3): 417-429.